

F1016

16-Port Fast Ethernet Rackmount Switch

F1016

16-Port Fast Ethernet Rackmount Switch

Products Description

F1016 provides 16 10/100Mbps autosensing ports and all ports support Auto MDI/MDIX for parallelwire and crosswire, making this device not only can be connection to common terminal equipments, but also can be cascade connection to other networking equipments to extend your networking easily.F1024 can provide you a easy, economic, high-performance solution for 100M networking, which is your ideal chioce for high-speed networking.



- 16 10/100Mbps RJ45 ports
- 19-inch rack-mountable, 1U steel case
- Plug and play, Without configuration

Key Feature

- Compliant with IEEE802.3, IEEE802.3u, IEEE802.3x
- Store & forward, share memory, non-blocking architect
- Supports MAC address self-learning and auto MDI/MDIX
- Provide 16 10/100Mbps auto-negotiation ports
- Support full-duplex 802.3x flow control and half-duplex backpressure flow control
- Supports 4K MAC address list, MAC address learning and auto-ageing
- Built-in switching power adapter, support AC 110-240V 50/60Hz input
- Fanless design
- Standard 19-inch rack-mountable, 1U steel case
- Plug and play, no need configuration

Product Features



Full wire-speed

Provide 16 10/100M auto-negotiation RJ45 ports. All ports have the the wire-speed forwarding capability and support IEEE 802.3x full-duplex flow control and half-duplex backpressure flow control.



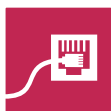
Excellent Lightning-Proof design

Integrated professional lightning-proof circuit which supports lightning-proof grade of the power is 4 (common mode protection 6KV). Excellent lightning-proof, anti-static and anti-interference capabilities ensure the switch to operate stably even in an unstable environment.



Quiet and Green Energy Conservation Design

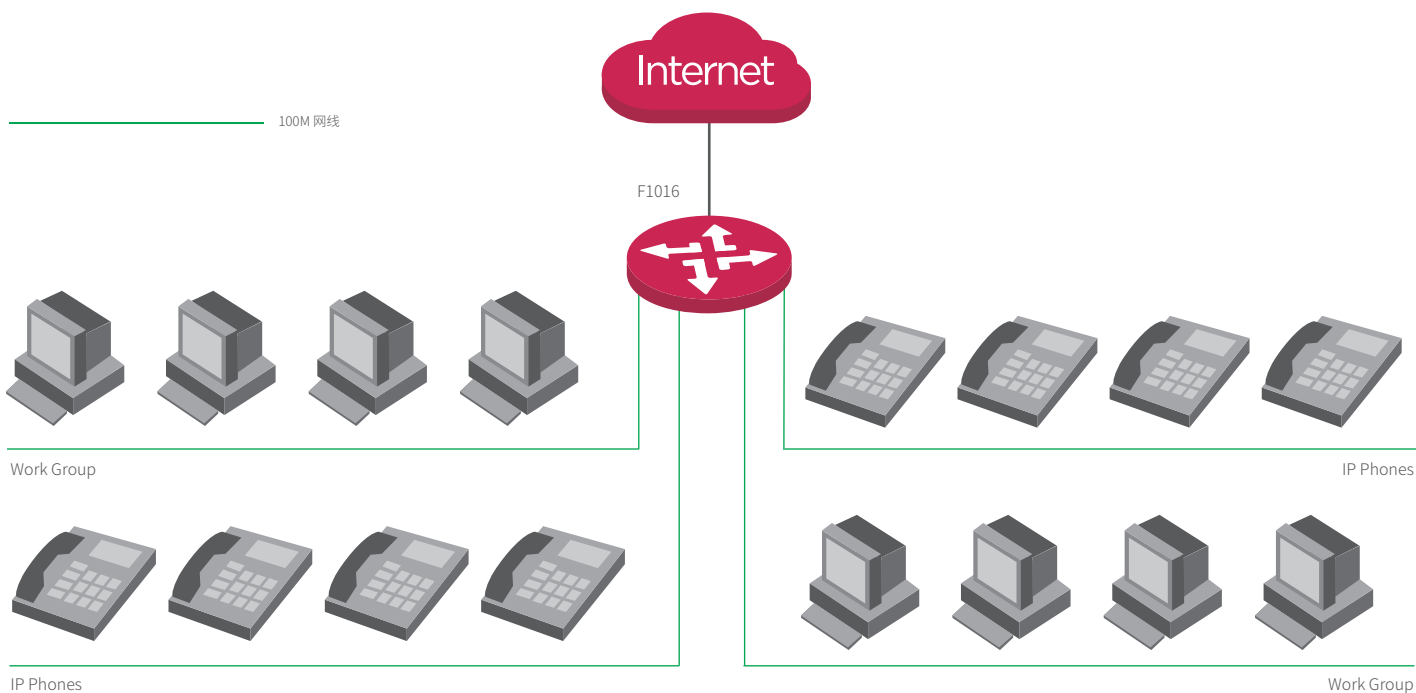
Adopts low-power consumption IC Plus chipset solution. Fanless design enables quiet and energy conservation. When no data transmits in the port, it will automatically change into power-saving state and utmost reduce power consumption and operating costs.



Easy to use

plug-and-play, which helps you quickly build 100Mbps wired network and greatly simplify the management and maintenance of equipment. It supports desktop and standard 19-inch rack mounted installation with two pairs of rack-mounted hangers, which can be easily installed in a standard 19-inch machine room cabinet.

Application Scenarios



Product Model	F1016
Hardware Features	
Standards&Protocols	IEEE 802.3、IEEE 802.3u、IEEE 802.3x
LED	16*Link/Ack ,1*Power
Interface	16*10/100Mbps RJ45 Ports
Transfer Method	Store-and-Forward
Switching Capacity	3.2 Gbit/s
Packet Forwarding Rate	2.38Mpps
Address Table	4K
Power input	AC:100~240V;50/60Hz
Power Consumption	6W
Fan Quantity	Fanless
Dimension (L×W×H)	294mm* 178mm*44mm
Environment	Operating Temperature: 0°C~40°C Storage Temperature: -40°C~70°C Operating Humidity: 10%~90% non-condensing Storage Humidity: 5%~90% non-condensing
Lightning Proof	Power supply>6KV
Certification	FCC、CE、RoHS

IP-COM
World Wide Wireless

Headquarters

IP-COM Networks Co.,Ltd.

Tel: +86 755-27653089

Fax: +86 755-27657178

Email: marketing@ip-com.com.cn

Website: www.ip-com.com.cn

ADD: Tower E3, No1001, Zhongshanyuan Road, Nanshan District, Shenzhen, China.

