

F1109D

9-Port 10/100M Unmanaged Switch

F1109D

9-Port 10/100M Unmanaged Switch

Products Description

F1109D is a 9-port 10/100M Unmanaged switch developed by IP-COM, offering 9 10/100 Mbps RJ45 ports. Equipped with large packet buffer, it also ensures smooth streaming even when 8 HD IP cameras are working simultaneously. You can enable port VLAN mode of the switch to protect your LAN network from broadcast storm and prevent loss of monitoring images. In addition, the switch offers 6 kV lightning protection for its uplink port. In a word, F1109D is a perfect choice for small and medium-sized IP surveillance



Key Feature

- Compliant with IEEE802.3, IEEE802.3u, IEEE802.3x standards
- 9*10/100Mbps auto-negotiation ports
- 2000 MAC address ,MAC auto Learning & auto Aging
- Auto MDI/MDIX
- IEEE 802.3x full duplex flow control, and backpressure half duplex flow control
- Offers 6 kV lightning protection for its uplink port
- Support DC 9 - 12V power input
- Support port VLAN mode
- Support network surveillance camera access,and prevent loss of monitoring images
- Plug and play

Product Features

Large Packet Buffer

F1109D is equipped with 1024 Kb packet buffer, twice of its counterparts, ensuring smooth streaming even when eight 500W HD IP cameras are working simultaneously.

Lightning Protection

The switch supports 6 kV lightning protection for uplink port, protecting the switch from thunderstorms and making it more stable.

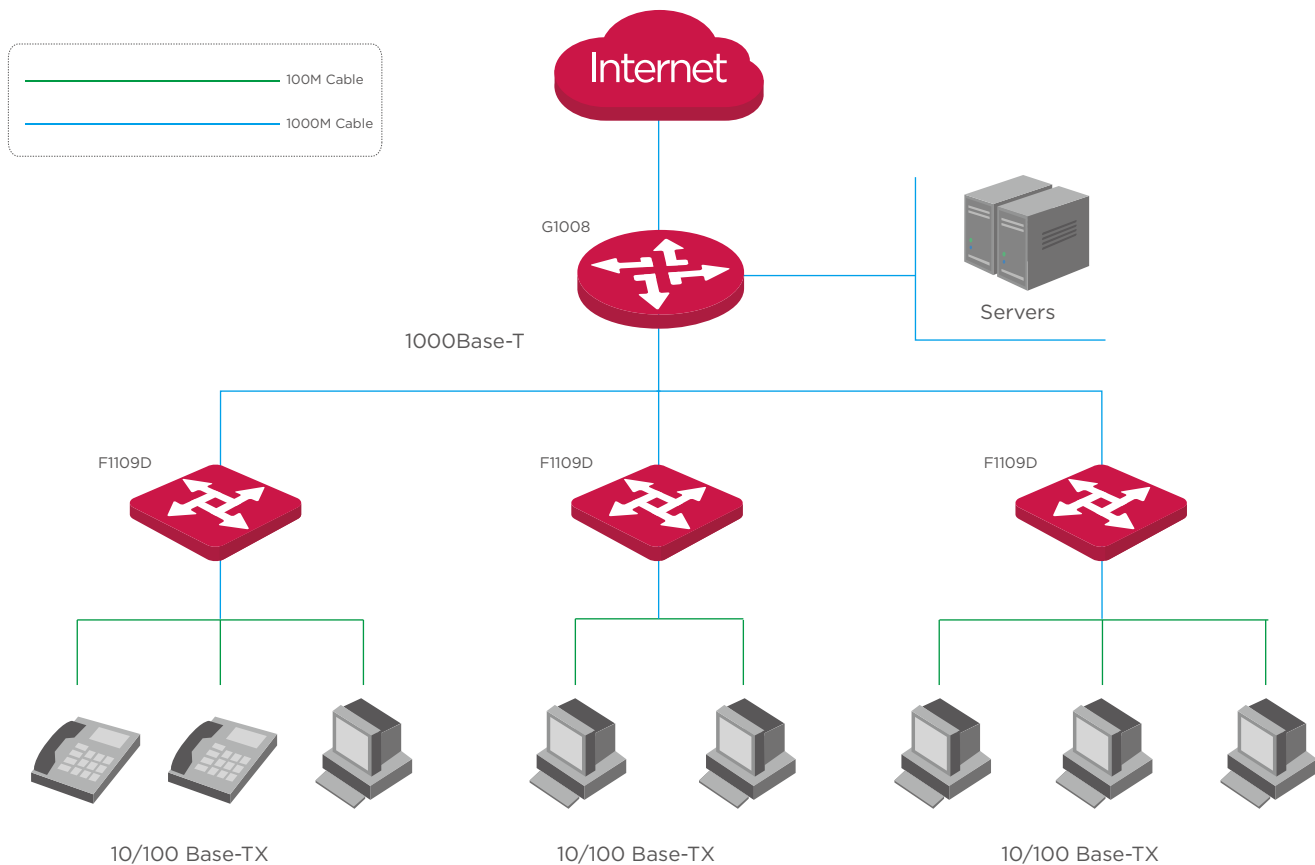
250m Transmission Distance

The switch supports network extension technology and data transmission can reach up to 250 meters, which can replace extenders and some optical fibers, expand network coverage and save your costs.

Simple Port VLAN Setup

With VLAN on enabled by the mode toggle, ports 1 to 8 are isolated from each other, enabling the switch to isolate broadcast storm, improving LAN security and data transmission.

Application Scenarios



Model NO.	F1109D
Hardware Features	
Standard	IEEE 802.3, IEEE 802.3u, IEEE 802.3x
Port	9 * 10/100 Mbps RJ45 port
Transmission media	Recommended: CAT5/5e UTP or better
Forwarding rate	10 Mbps: 14880 pps 100 Mbps: 148800 pps
Power	Input: 100 - 240 V AC, 50/60 Hz Output: DC 9 - 12 V
Lightning protection	6 kV for uplink port
Dimension(L * W * H)	140 mm * 66.5 mm * 25.3 mm
LED indicator	1 * Power 9 * Link/Act
Switching capacity	1.8 Gbps
MAC address table	2 K
Power consumption	Max: 5 W
Software Features	
Store-and-forward	Supported
Protocol	CDMA/CD
MAC address learning	Auto learning & auto aging
VLAN	Supported. Port 9 is an uplink port and ports 1 to 8 are isolated from each other.
Others	
Temperature	Operating temperature: (0 - 40)°C Storage temperature: (-40 - 70)°C
Humidity	Operating humidity: (10% - 90%) RH, non-condensing Storage humidity: (5% - 90%) % RH, non-condensing
Certification	CCC, CE, FCC, RoHS
Related model	F1109DT 8FE+1GE Unmanaged Switch
Operating system	Windows 8 32/64 bit, Windows 7 32/64 bit, Windows XP 32/64 bit, Linux, MAC OS
Package contents	1 * 9-Port 10/100M Unmanaged Switch 1 * Power adapter 1 * Quick installation guide

IP-COM
World Wide Wireless

Headquarters

IP-COM Networks Co.,Ltd.

Tel: +86 755-27653089

Fax: +86 755-27657178

Email: marketing@ip-com.com.cn

Website: www.ip-com.com.cn

ADD: Tower E3, No1001, Zhongshanyuan Road, Nanshan District, Shenzhen, China.

Copyright©2016 IP-COM Networks Co.,Ltd.All Rights Reserved

